



Bulgarian Swiss Research Programme Mid-term meeting



SWISS NATIONAL SCIENCE FOUNDATION



BULGARIAN-SWISS COOPERATION PROGRAMME
БЪЛГАРО-ШВЕЙЦАРСКА ПРОГРАМА ЗА СЪТРУДНИЧЕСТВО



Contents

1. The SNSF in a nutshell
2. International Co-operation in research: SNSF's philosophy, strategic objectives and instruments
3. The Enlargement Contribution
4. The Grant Agreement
5. Reporting: Scientific and financial reporting
6. Other important elements



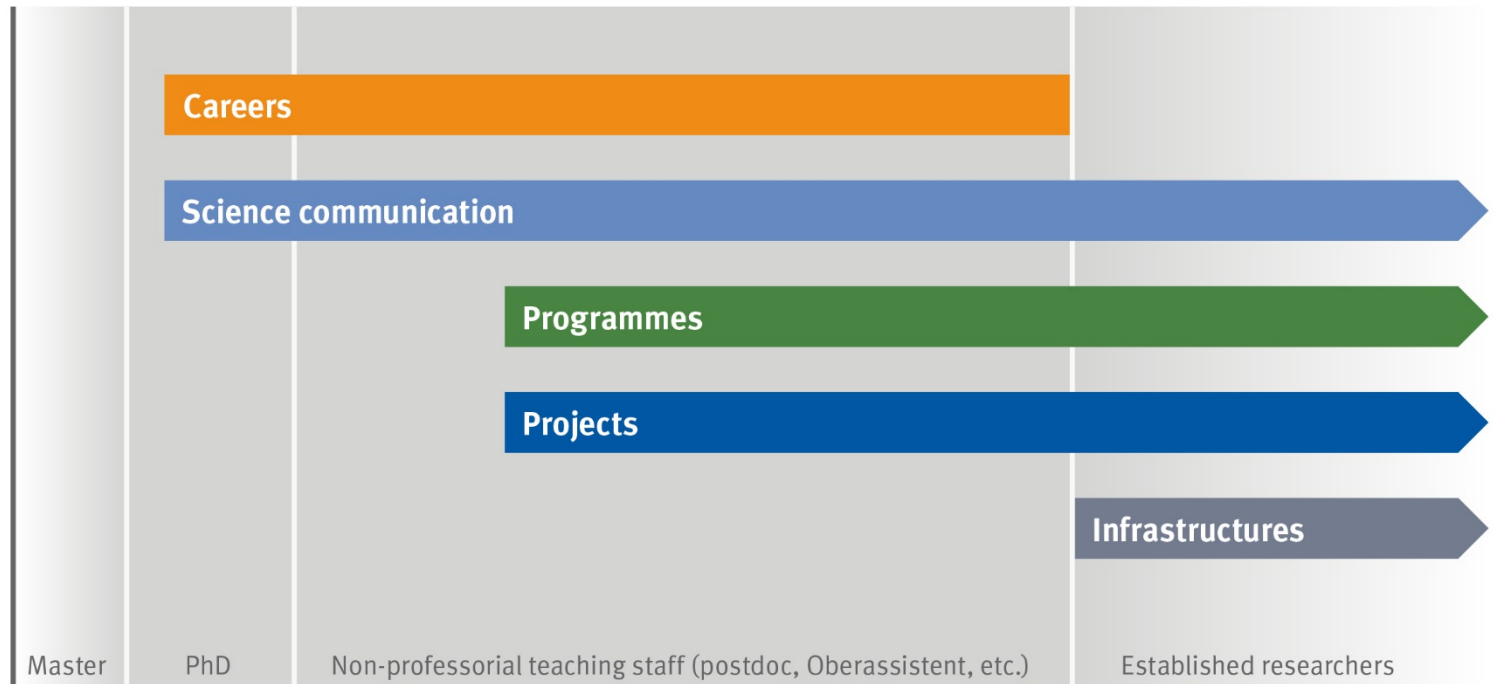
The institution



THE SNSF

- promotes scientific basic research on behalf of the Confederation
- invests in young scientists
- enables research stays abroad
- promotes international co-operation
- promotes gender equality

Overview



Source: Guidelines for selecting SNSF funding schemes, August 2011

Researchers at universities of applied sciences and universities of teacher education without a doctorate need to show that they have the necessary research experience.



International Co-operation: Strategy and instruments



International co-operation: philosophy

- **Bottom-up approach**: international networking comes from research community
- Providing **optimal framework conditions**, i.e. mainly subsidiary actions to facilitate bottom-up cooperation between individuals
- Focussing on the needs of the **Swiss research community** and keeping low bureaucracy
- If top-down approach (programmes): Combining the top down approach with recognised **scientific quality standards** even when other goals come into play (e.g. development component)
- Co-operation with **sister organisations** (autonomous, peer review, competition): added value through exchange, best practices, opening up funding systems, common positioning on policy issues
- **Shaping research policy**: expertise for proactive and constructive contributions from SNSF to international developments



International co-operation: strategic objective

The strategic objective which the SNSF pursues in its international co-operation work is to **optimise and facilitate** the conditions under which international collaboration and scientific exchange can take place.

Its activities aim to **lower barriers** to cross-border co-operation on individual projects, international programmes and access to research infrastructure, **to facilitate research scientists' mobility**, to **foster institutional co-operation** and to **build scientific capacity** in research communities in developing nations and countries in transition.



Instruments

- Worldwide Instruments
 - International Exploratory Workshops (IEW)
 - International Short Visits (ISV)
 - Bilateral Programmes of the Swiss Confederation (BRICS countries)
 - Enlargement contribution (Bulgaria, Romania)
 - SCOPES (Scientific co-operation between Eastern Europe and Switzerland)
 - Developing countries (r4d, ERAfrica)



All countries

International short visits (1 week to 3 months)

- Allow researchers working in Switzerland to go abroad or researchers from elsewhere to come to Switzerland
- Exchange of knowledge that is beneficial to both co-applicants and their institutions

International exploratory workshops (2-5 days)

- Allow researchers working in Switzerland to organise workshops with partners from abroad
- Should bring together scientists with different backgrounds

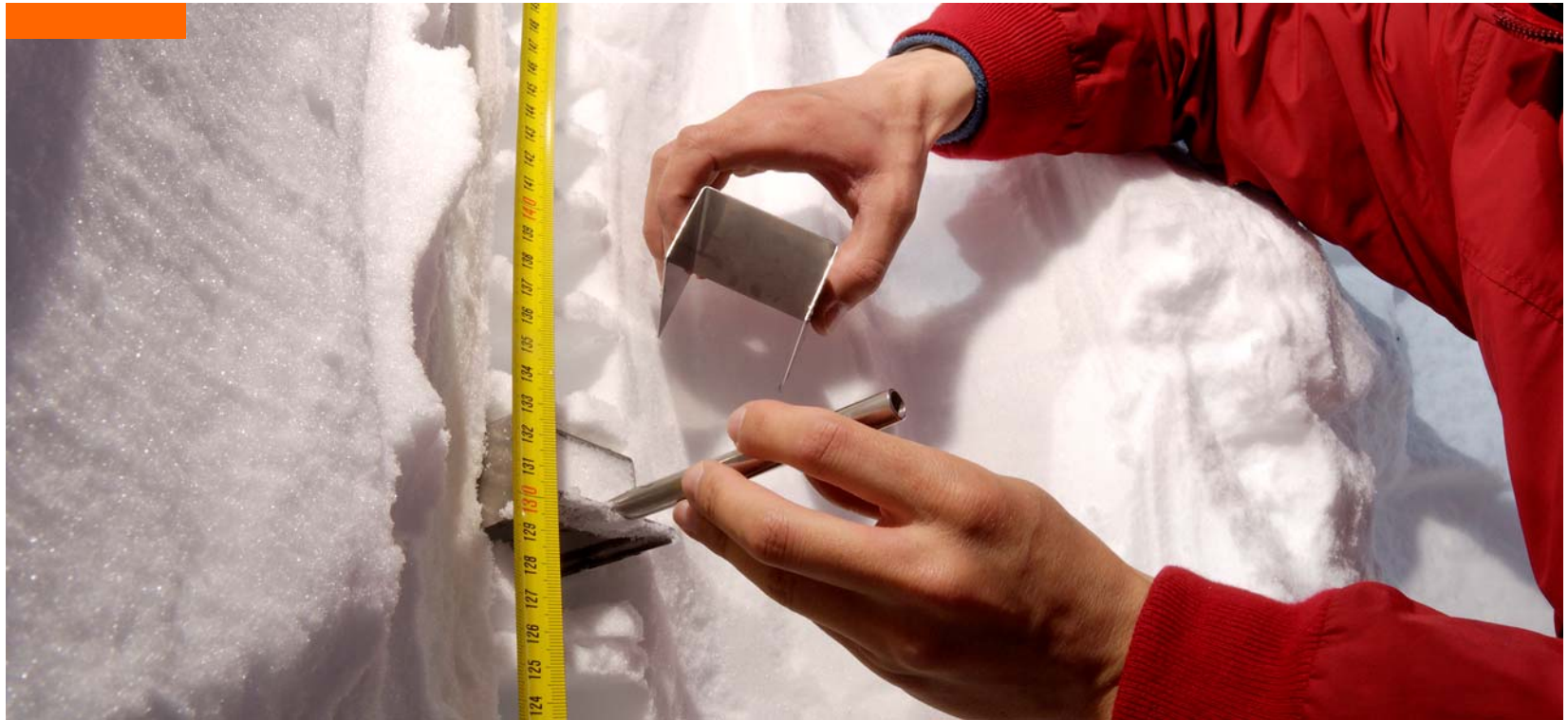


Cooperation with Eastern Europe

- SCOPES = Scientific Co-operation between Eastern Europe and Switzerland
- Swiss Contribution to the enlargement of the EU

EU FP7 activities

- WBC INCO-Net
- ERA-NET RUS and ERA-NET+ Russia (to be submitted)



The Enlargement contribution



Enlargement contribution

Swiss Contribution to the enlargement of the EU

- Switzerland supports the EU-10 with an Enlargement Contribution (CZ, EST, H, LT, LV, PL, SK, SLO, BG, RO)
- As a part of the Enlargement Contribution, the New Member states (excluding M and CY) are also eligible for the Scientific Exchange Programme (SCIEX)
- Five new EU member states receive money for research
- Programmes in Hungary, Poland and Lithuania are managed by national executive agencies
- SNSF was mandated by the SDC to manage the programmes with Romania and Bulgaria



Enlargement contribution, Bulgaria and Romania

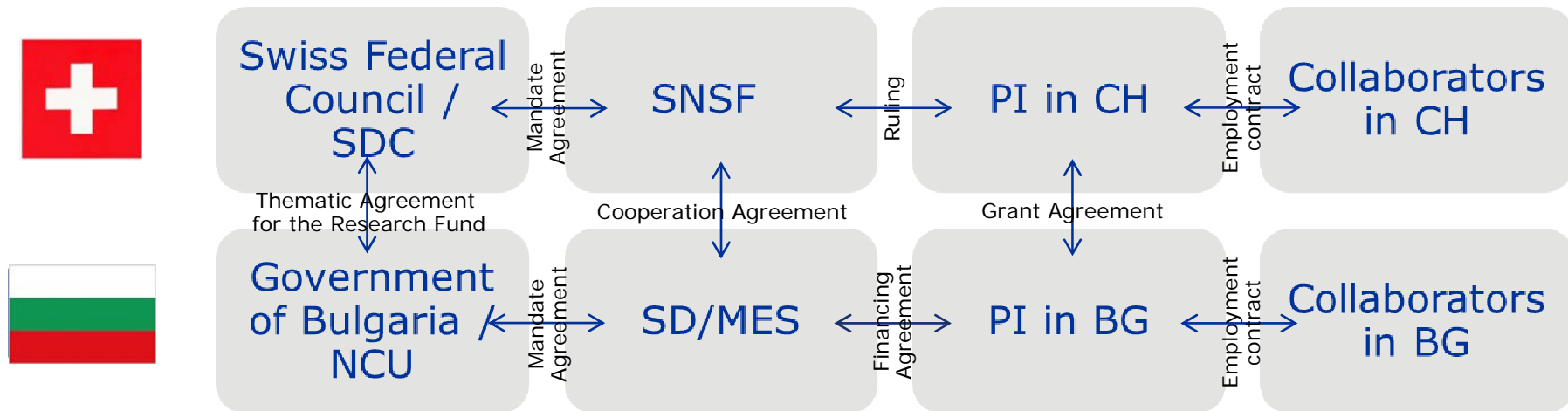
- Funding comes from Switzerland's contribution to the EU enlargement
- In Switzerland, SDC/SECO manage these contributions
- In the new member states, National Coordination Units (NCU) are responsible for the inclusion of the Research Funds
- 85% funding comes from CH, 15% from new member state
- At least 50% of the funding must go to the new member states



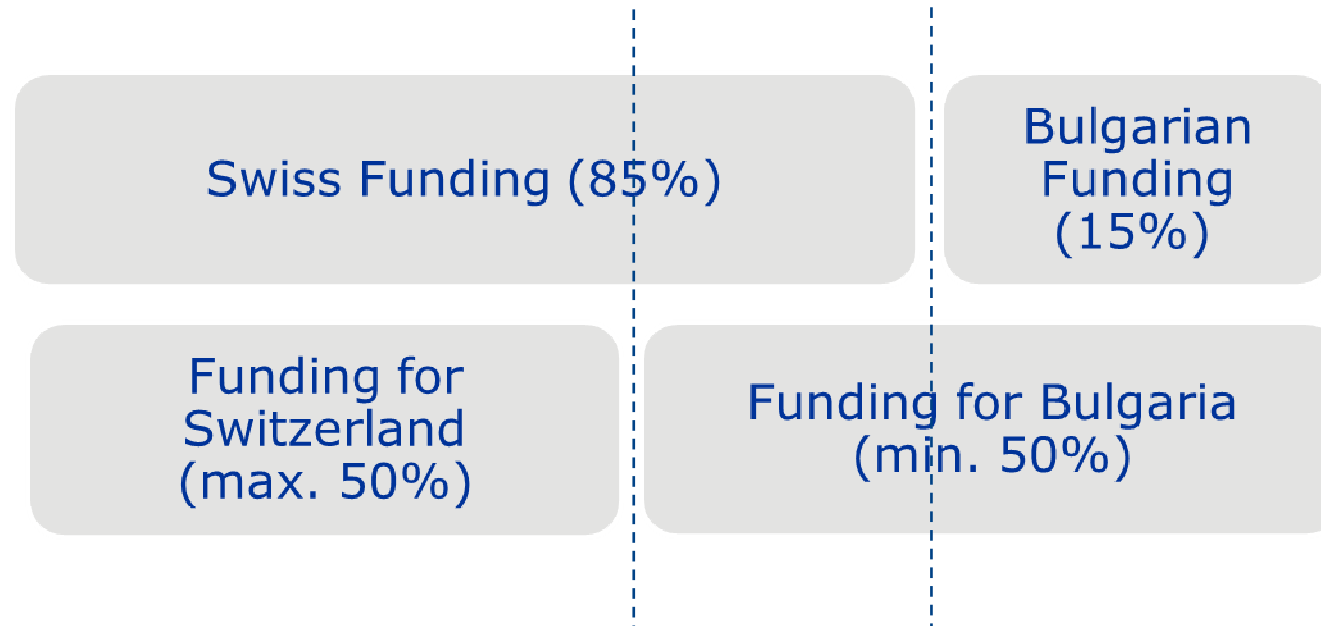
A few facts and figures, Bulgaria

- Support scientific cooperation in the form of Joint Research Projects (JRPs) lasting up to 3 years
- CHF 4'230'000.- available
- 13 projects à CHF 4'258'000.- funded (Swiss contribution: CHF 3'758'257.-, BG contribution: CHF 500'390.-)
- Thematic Focus
 - Ecological forestry/farming and waste management (7x)
 - Social disparities and regional differences (4x)
 - Drug development (2x)

Links between the different actors



Main administrative challenges



- Who reports what to whom?
- Some compatibility difficulties between SDC, SNSF and SD/MES requirements
- Fluctuating exchange rates



The Grant Agreement



The Grant Agreement (PI in CH – PI in BG and institute in BG)

Important information contained in the Grant Agreement

- Role of the Beneficiaries
- Transfer of Funds
- Ownership of Equipment and other Material Investments
- Reporting
- Obligation to information



The Grant Agreement (PI in CH – PI in BG and institute in BG)

Role of the Beneficiaries

- PIs are responsible for implementation and completion of JRP
- PI in CH responsible for transfer of Swiss financial contribution of the SNSF to the PI in BG
- PI in CH responsible for submission of reports to SNSF
- PI in BG must deliver to PI in CH information needed to write reports and all other relevant documents in due time
- PI in CH must inform SNSF about any changes affecting the grant. SNSF will in turn inform SD/MES.



The Grant Agreement (PI in CH – PI in BG and institute in BG)

Transfer of Funds

- Funds may only be transferred to researchers who are listed as other grantees in the ruling
- Funds to PI in BG must be transferred only to the account indicated in “Grant Agreement between the Bulgarian and Swiss Beneficiaries”. Recommendation: This account should be project-specific



The Grant Agreement (PI in CH – PI in BG and institute in BG)

Ownership of Equipment

- Observe the principles of free competition and transparency and order material from the supplier that offers the best price/performance ratio
- Material bought for PI in CH => SNSF regulations apply (incl. at the end of the project)
- Material bought for PI in BG => SD/MES regulations apply (incl. at the end of the project)



The Grant Agreement (PI in CH – PI in BG and institute in BG)

Obligation to information

The Beneficiaries shall immediately inform the SNSF of any occurrence and/or event likely to affect the execution and/or the successful conclusion of the JRP.



Reporting



Scientific report

- Yearly (6 weeks after end of period)
- Request is sent out automatically (6 weeks before end of period)
- Includes all the activities (done in CH and BG)
- To be submitted to SNSF via mySNF
- Contains two parts:
 - Qualitative part: Template provided
 - Quantitative part: Output data to be completed on mySNF. Are published on P3



Financial report

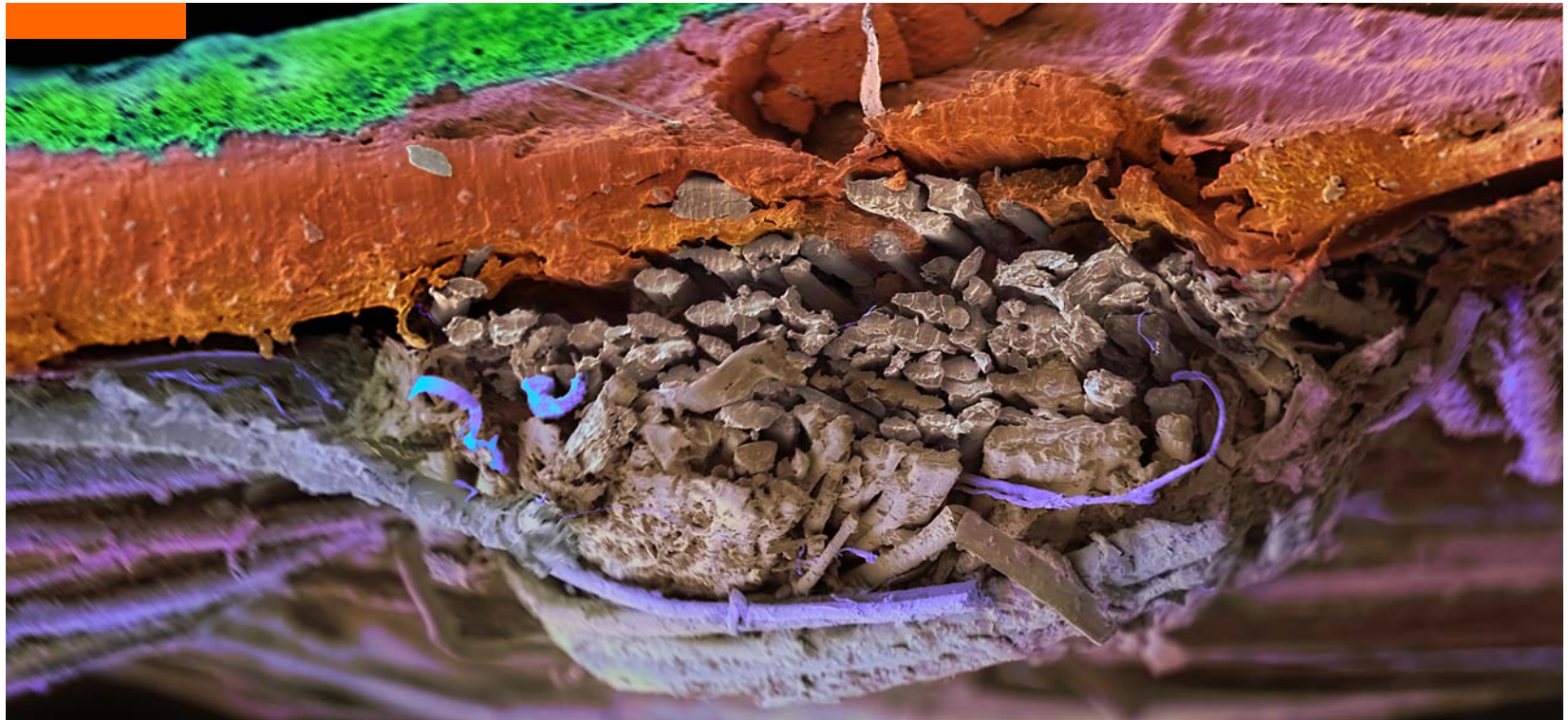
- Yearly (6 weeks after end of period)
- Request is sent out automatically (6 weeks before end of period)
- Includes all the expenses (done in CH and BG)
- Excel list for expenditures provided
 - One for PI in CH: facultative
 - One for PI in BG: mandatory
- Budget items are to be respected
- Should be submitted to SNSF via mySNF
- Final balance in CHF

Excel sheet for Bulgarian budget

1	Romanian-Swiss Research Programme									
2										
3	Name of Swiss PI and Romanian PI:									
4	Project number:		IZERZO -							
5	Concerned research team:		Romanian							
6	Reporting period:									
7										
8	Legend for budget categories: (please adjust according to the approved budget)									
9	0 - Income / 1 - Equipment / 2 - Consumables / 3 - Other costs / 4 - Travel / 5 - Salaries (incl. social charges)									
10										
11	Please press CTRL + ALT + F5 to refresh calculation pivot									
12	*: Please consult ch. 7 of the guidelines for lifetime management									
13	Amount in RON									
14	Date	Description	Receipt number	Budget category	Amount (foreign currency)	Foreign currency	Exchange rate *	Income	Expenses	Balance
15	15.09.2012	Transfer from Swiss PI	1	0	60'000.00	CHF	3.540	212'400.00		212'400.00
16	30.09.2012	Transfer from UEFISCDI	2	0	20'000.00	CHF	3.570	71'400.00		283'800.00
17	03.10.2012	Purchase vortex mixer	3	1					650.00	283'150.00
18	06.10.2012	Salary M. Popa Nov. 2012 (incl. Social charges)	4	5					4'000.00	279'150.00
19		Chemical reagents	5a, 5b	2	234.50	Euro	4.350		1'020.08	278'129.93
20	20.10.2012	Flight to Zurich	6	4					3'000.00	275'129.93
21	25.10.2012	Flate rate for 5 day stay in Zurich	7	4	800.00	CHF	3.587		2'869.60	272'260.33
22	20.03.2013	Transfer from Swiss PI	8	0	40'000.00	CHF	3.630	145'200.00		417'460.33
23	31.08.2013	Final balance in CHF			116'392.28	CHF	0.279			
24									-	-
25									-	-
26										

Budget category	Total Income RON	Total Expenses RON	Exchange rate * CHF	Total Income CHF	Total Expenses CHF
1		650.00	0.279	-	181.23
2		1'020.08	0.279	-	284.41
4		5'869.60	0.279	-	1'636.51
5		4'000.00	0.279	-	1'115.24
0	322'800.00		0.279	90'000.00	-
Total RON	322'800.00	11'539.68		90'000.00	3'217.38

Date	Amount (CHF)	Exchange rate		Amount (RON)	Source
		RON -> CHF	CHF -> RON		
15.09.2012	30'000	3.540	0.282	106'200	Swiss PI
30.09.2012	20'000	3.570	0.280	71'400	UEFISCDI
20.03.2013	40'000	3.630	0.275	145'200	Swiss PI
Unique exchange rate	90'000	3.587	0.279	322'800	



Other important elements



Contacts

SNSF

swisscontribution@snf.ch

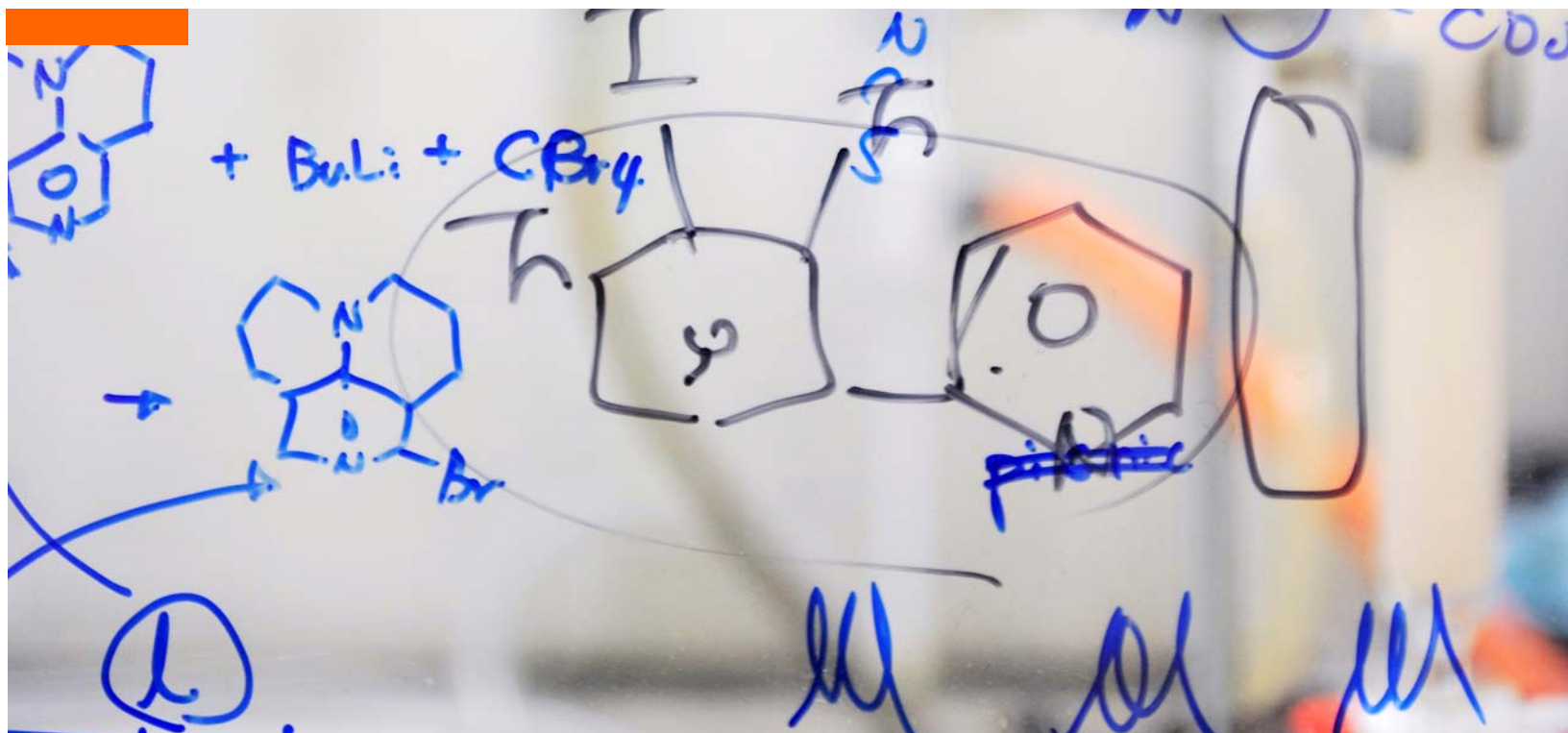
Programme: Timothy Ryan

Finance: Jürg Schüpbach

Administration: Peter Kräuchi

SD/MES

Programme: Yanita Zherkova



Thank you for your attention